

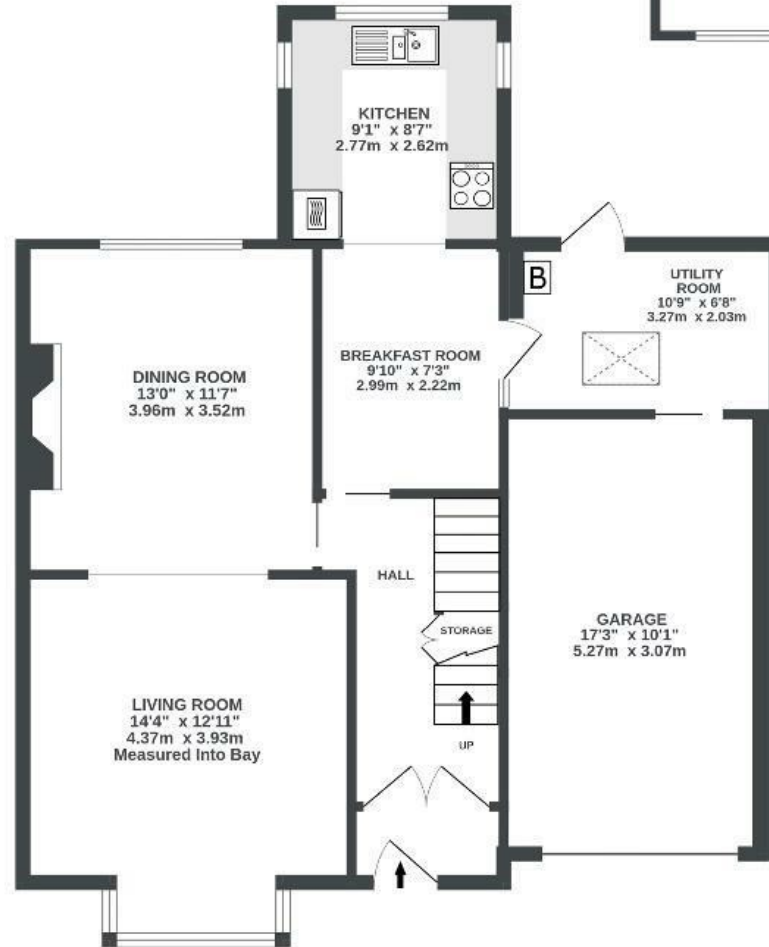
Raeburn Road

ST GEORGE

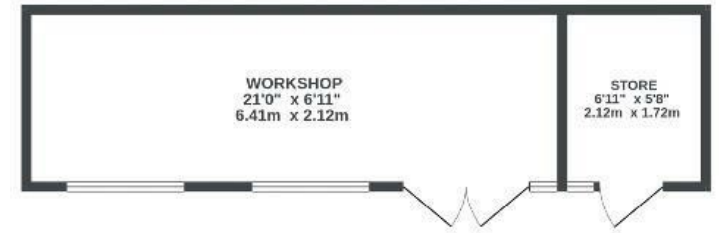
APPROXIMATE FLOOR AREA
119.3 SQM / 1284 SQFT



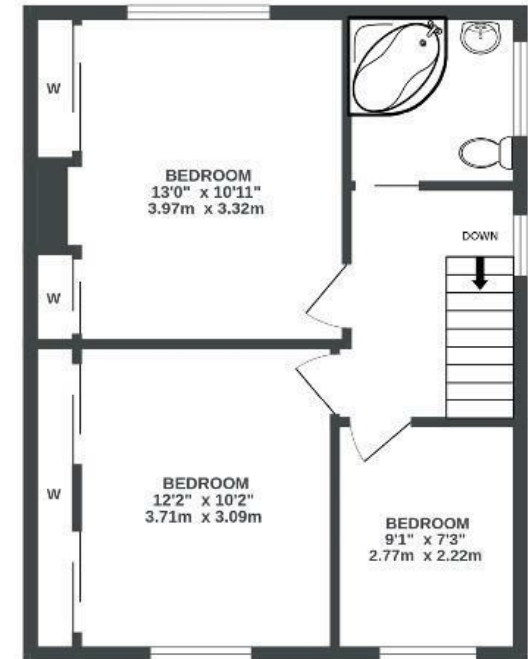
GROUND FLOOR
803 sq.ft. (74.6 sq.m.) approx.



GARDEN WORKSHOP
(NOT INC IN TOTAL SQ.M)
0 sq.ft. (0.0 sq.m.) approx.



1ST FLOOR
481 sq.ft. (44.7 sq.m.) approx.



Boardwalk

Raeburn Road , BRISTOL



£395,000



3 Bedrooms



Bristol, BS5
8PS



1 Bathrooms

"This has been a lovely family home for me for over 50 years and I have loved living here. We have always had great relationships with our neighbours and are extremely fortunate to have so much green space close by. The location has been fantastic for travelling in and out of the city too."

